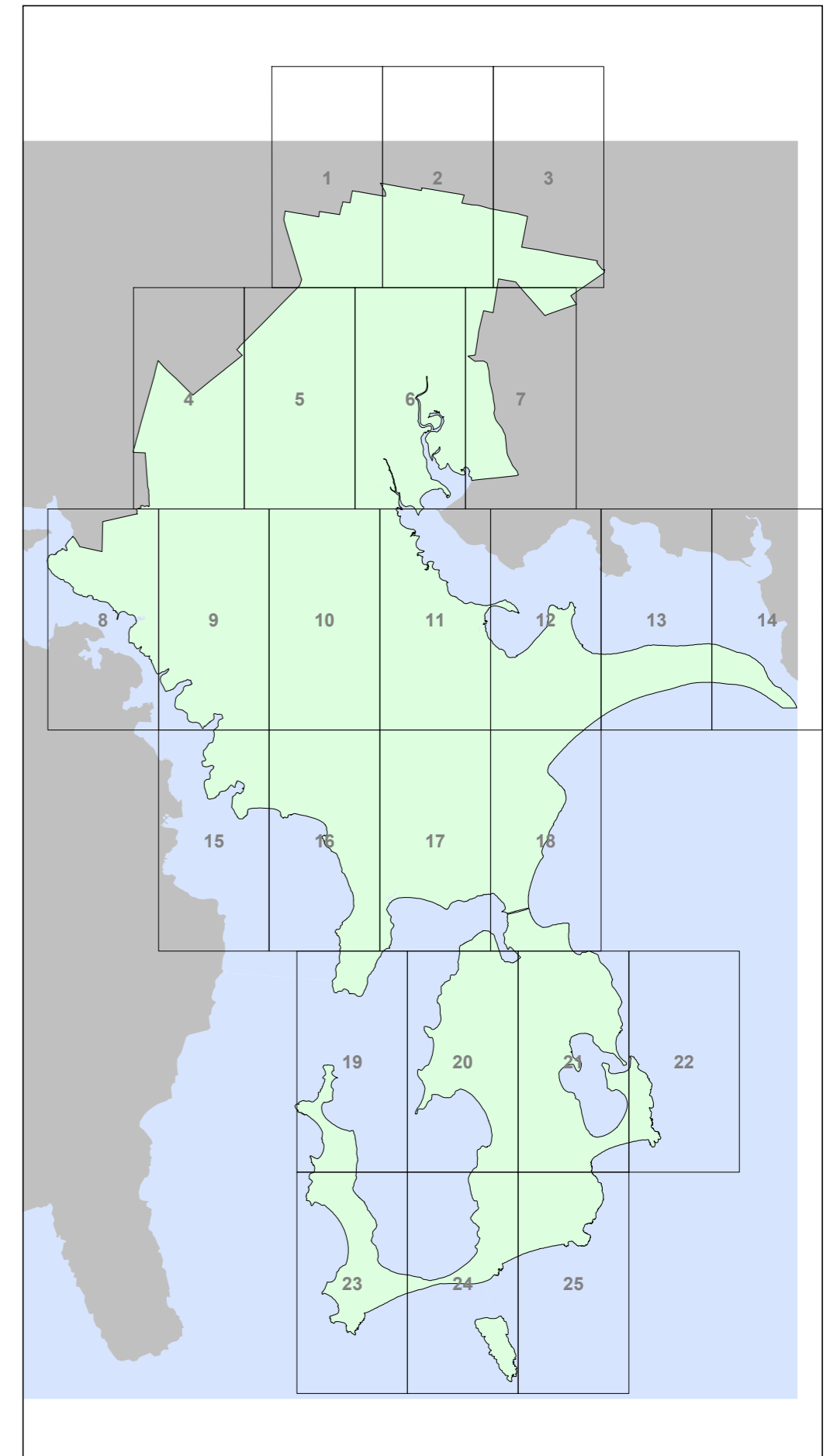
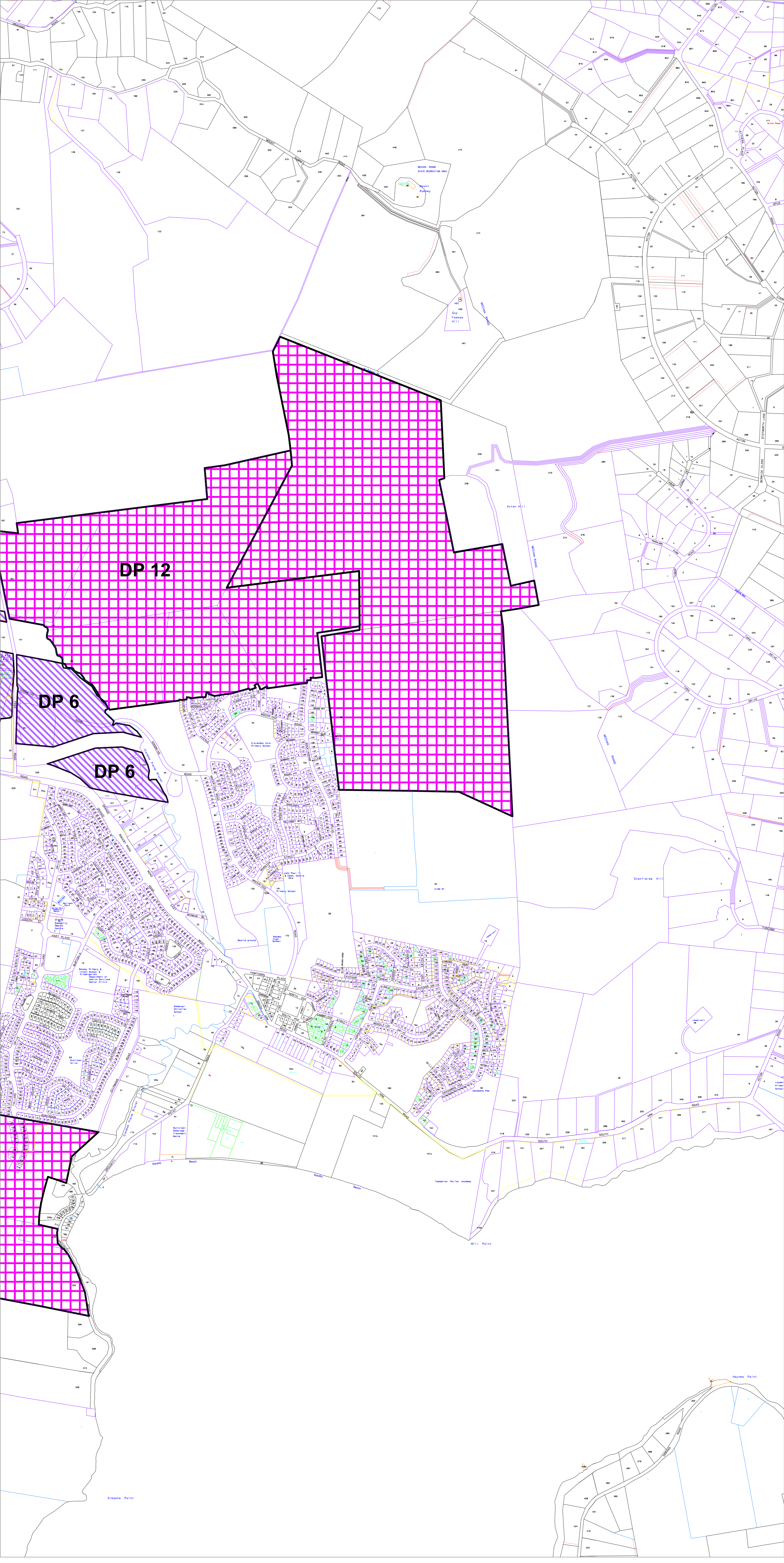
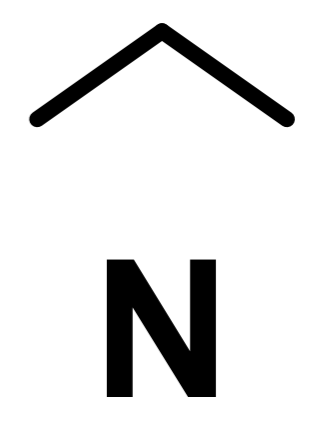


CLARENCE PLANNING SCHEME 2007

Scale 1:10000 @ A1



VM	VEGETATION MANAGEMENT OVERLAY
H	HERITAGE OVERLAY
BB	BELLERIVE BLUFF OVERLAY
BC	BELLERIVE CENTRE OVERLAY
RV	RICHMOND VILLAGE OVERLAY
SI	SUBJECT TO INUNDATION OVERLAY
MC	MT CANOPUS OVERLAY
QR	QUION RIDGE OVERLAY
AB	AIRPORT BUFFER OVERLAY
DP	DEVELOPMENT PLAN OVERLAY
EB	ENVIRONMENTAL BUFFER OVERLAY
CM	COASTAL MANAGEMENT OVERLAY
SLSS	LAND POTENTIALLY AFFECTED BY SEA LEVEL RISE AND STORM SURGE OVERLAY

17 - DP

SCHEDULE OF AMENDMENTS
A-2008/29
Amend the development plan overlay area to apply to 25 Brogo Way, Clarendon Vale and part of 260 Acton Drive, Acton Park. (Effective from 4 June 2009)
A-2009/18
The inclusion of the area subject to the Paranville Development Plan (DPO12) (Effective from 6 Feb 12)
A-2011/14
To delete the current DPO 5 & 6 areas and replace with the revised areas. (Effective from 24 Sept 13)